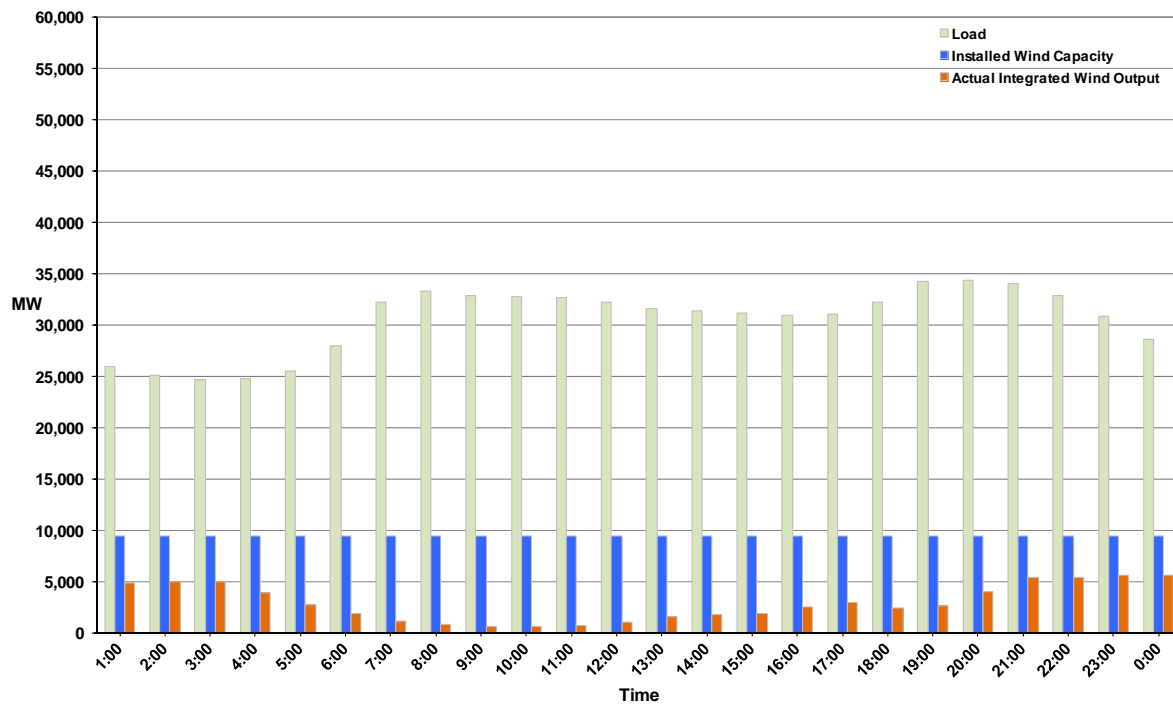




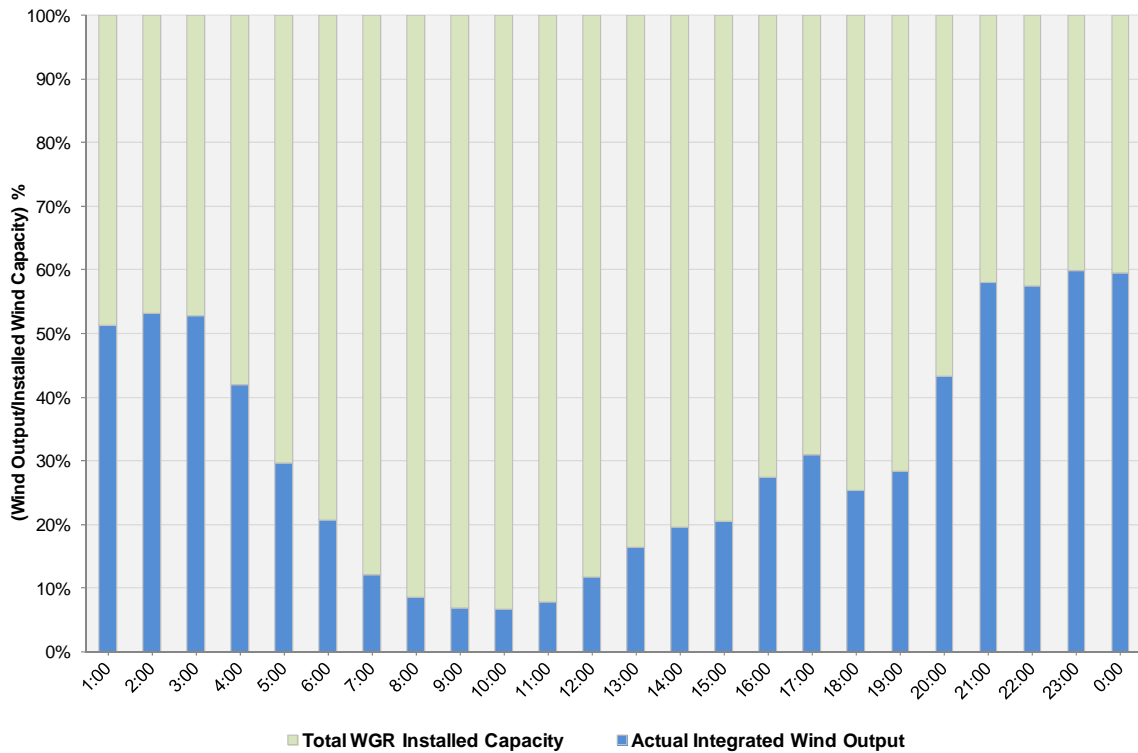
ERCOT Grid Operations Wind Integration Report: 11/17/11

| | |
|----------------------|-----------|
| Peak Load | 34,331 MW |
| Load Peak Hour | 20 |
| Wind over Peak | 4,083 MW |
| Wind Record 10/07/11 | 7,400 MW |
| Max Wind Value | 5,938 MW |
| Wind Peak Time | 22:40 |
| Wind Integration % | 19.49% |

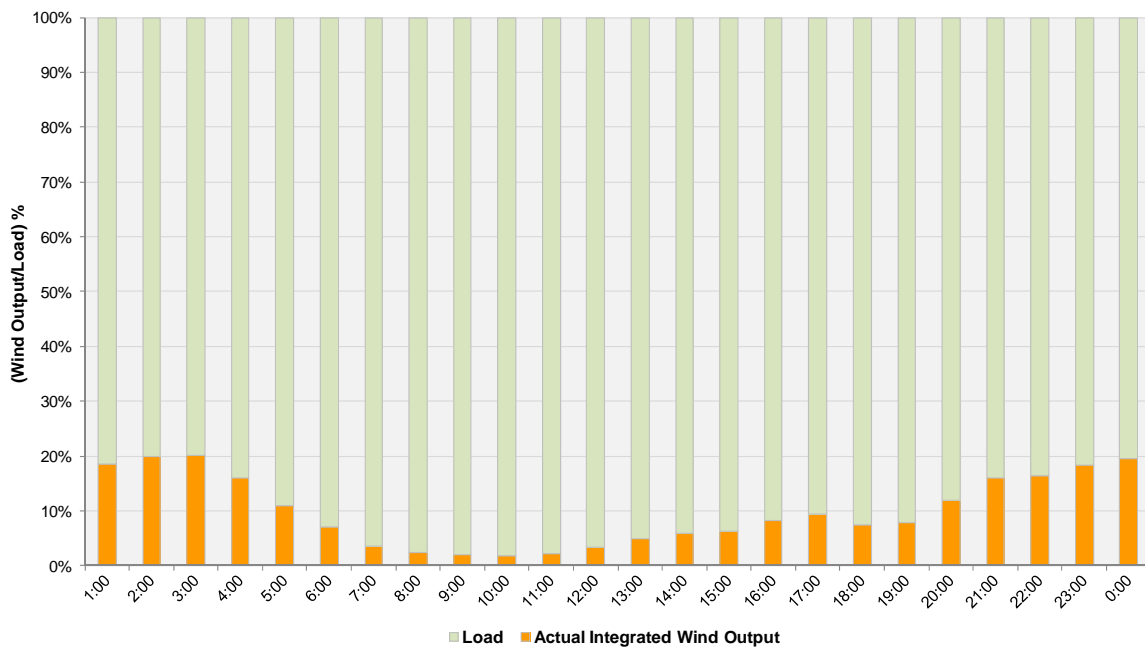
Hourly Average Actual Load vs. Actual Wind Output
11-17-2011



Actual Wind Output as a Percentage of the Total Installed Wind Capacity
11-17-2011



Actual Wind Output as a Percentage of the ERCOT Load
11-17-2011



ERCOT Load vs. Actual Wind Output 11/10/2011 - 11/17/2011

